

VILLAGE ESTATES

93 Main Road, Sidcup, Kent DA14 6ND

Tel: 0208 302 1002

www.village-estates.com

Email: sidcup@village-estates.com



CHARACTER PROPERTY

THROUGH LOUNGE/DINER

THREE BEDROOMS

QUIET LOCATION

WALKING DISTANCE TO HIGH STREET

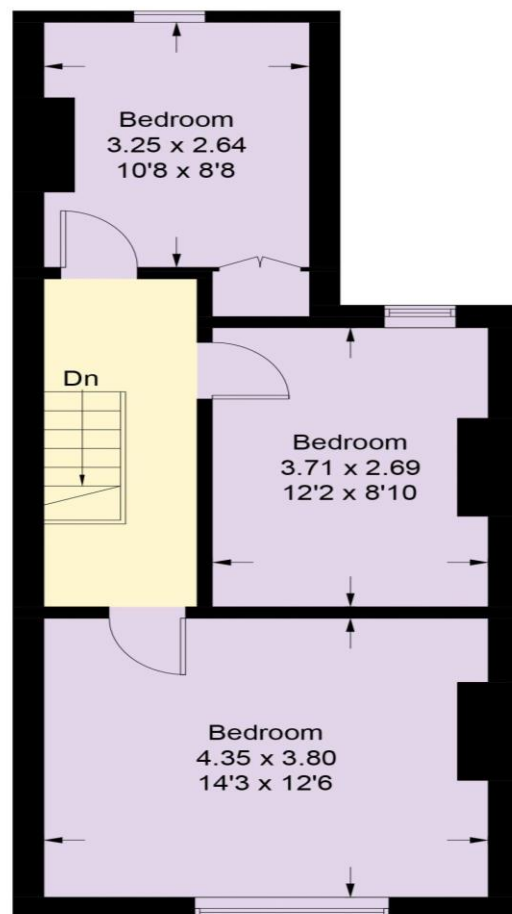
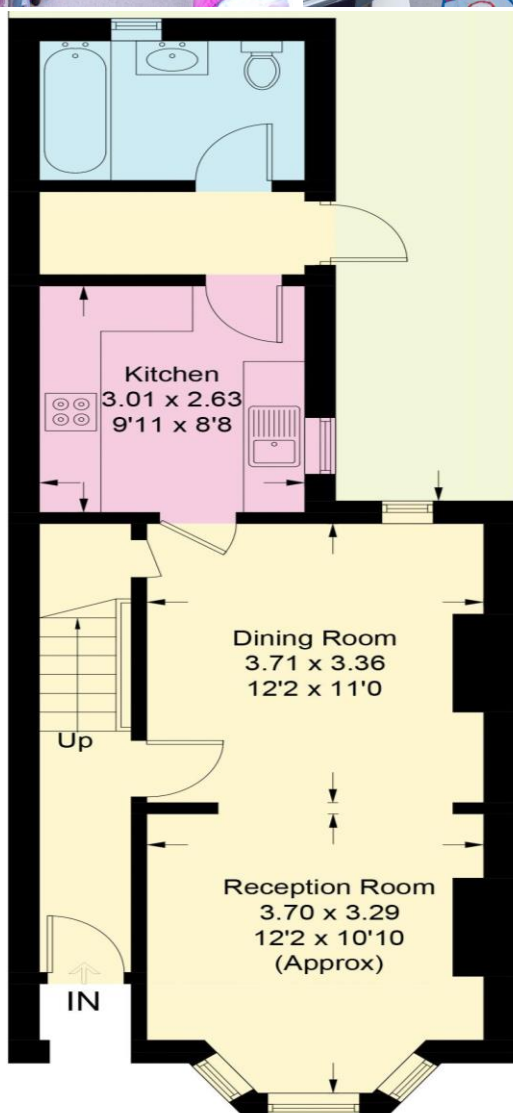
EASY ACCESS TO A20



12 Cambridge Road
Sidcup, DA14 6PT

Guide Price £425,000-£450,000

THREE BEDROOM period property situated in a quiet side road within walking distance to Sidcup HIGH STREET and LONGLANDS PRIMARY SCHOOL. Offering a great sense of space with an OPEN PLAN lounge diner and dual aspect, we highly recommend and internal viewing.



CURRENT ENERGY EFFICIENCY RATING 'E'

CONSUMER PROTECTION FROM UNFAIR TRADING REGULATIONS 2008

Please note that any services, heating system or appliances have not been tested, and no warranty can be given or implied as to their working order. You are advised to obtain verification from your solicitor or surveyor. References to the tenure of a property are based on information supplied by the seller. We have not had sight of the title documents and a buyer is advised to obtain verification from their solicitor. Items shown in photographs are not included unless specifically mentioned within the sales particulars, but may be available by separate negotiation. Whilst every attempt has been made to ensure the accuracy of the floor plan contained here, measurements of doors, windows, rooms and any other items are approximate and no responsibility is taken for any error, omission, or mis-statement. We advise you to book an appointment to view before embarking on any journey to see a property, and check its availability. The accuracy of these details are not guaranteed and they do not form part of the contract.